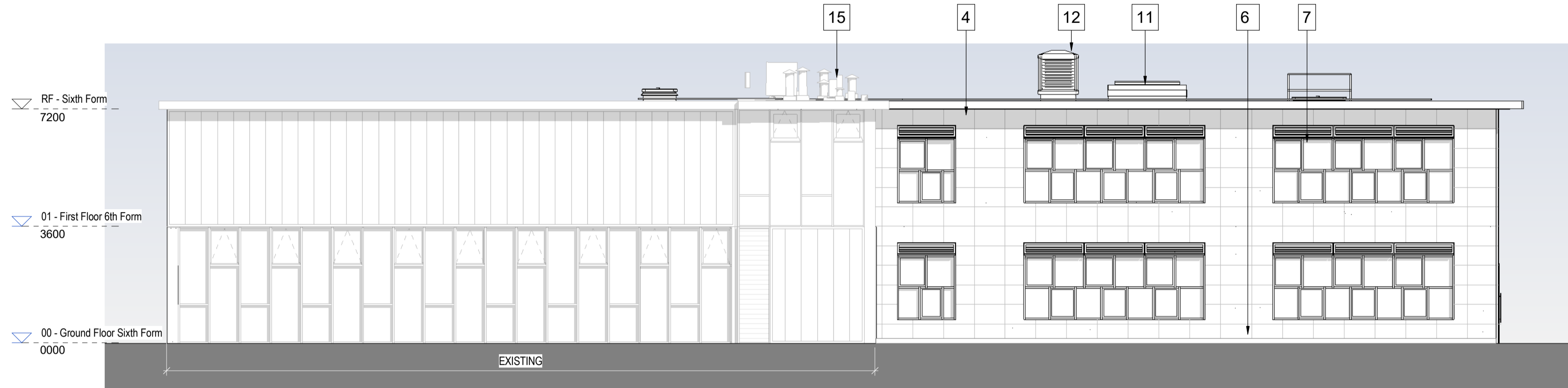
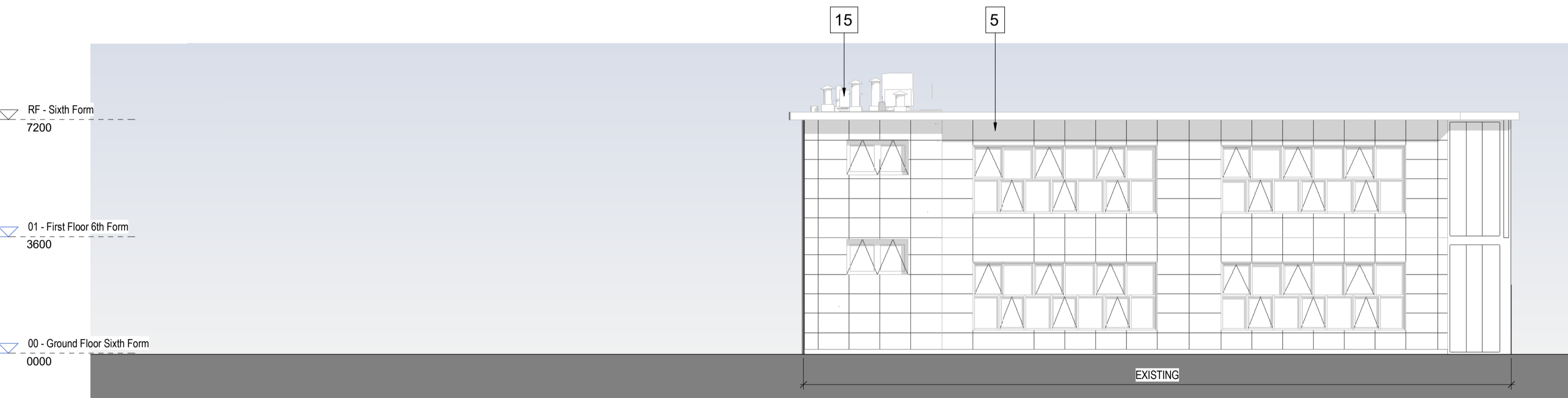


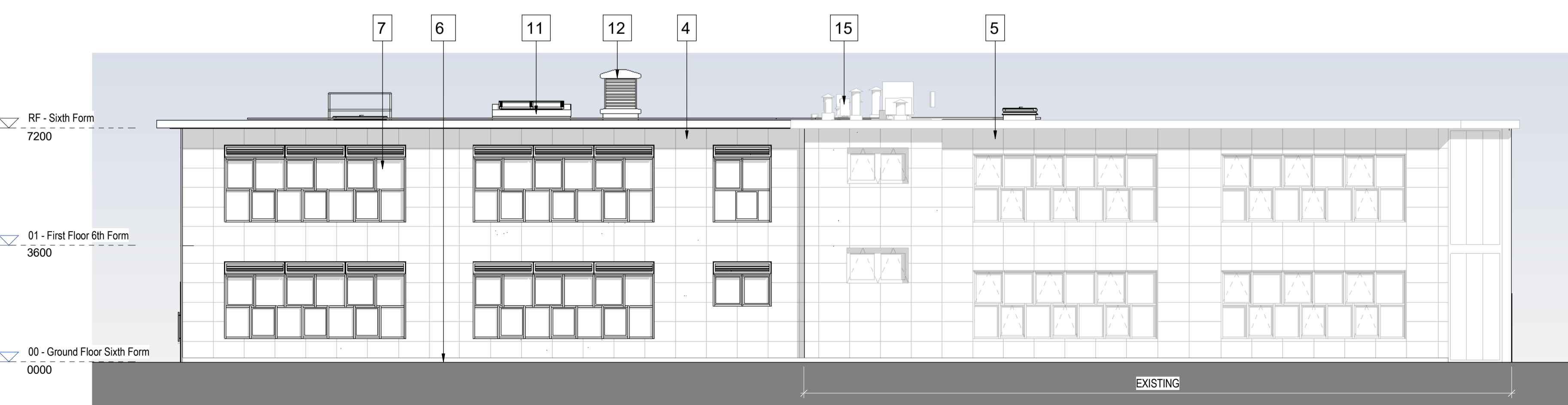
Elevation 6th Form North Existing
Scale: 1 : 100



Elevation 6th Form North Proposed
Scale: 1 : 100



Elevation 6th Form South Existing
Scale: 1 : 100



Elevation 6th Form South Proposed
Scale: 1 : 100

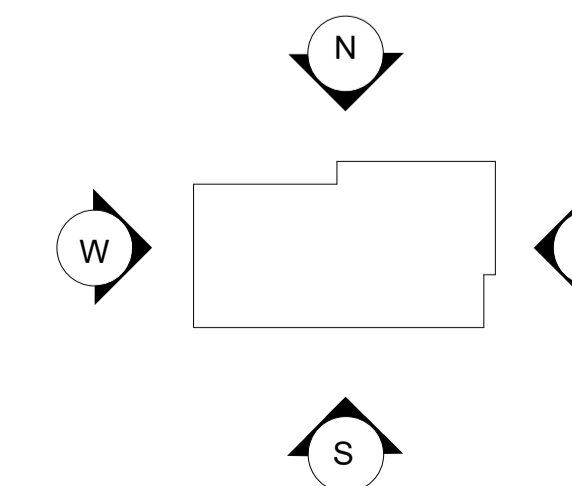
KEY: EXTERNAL ELEVATIONS	
1	Product: Dining Cladding Colour: Equitone Lunera Hessian or similar to complement existing brown concrete panels
2	Product: Curtain Wall with Window & Doors Colour: Dark grey
3	Product: Brise Soleil Colour: White
4	Product: 6th Form Cladding Colour: Equitone Natura - Quartz White
5	Product: Existing 6th Form Trepan Cladding Colour: White
6	Product: Plinth Colour: Dark grey to match
7	Product: Window & Door with louvre Colour: Dark grey to match existing
8	Product: Curtain Wall Colour: Dark grey
9	Product: Roof Fascia Colour: Dark grey
10	Product: Collapsible railings Colour: Galvanised

11	Product: Rooflight Colour: to match existing
12	Product: Window Sill Colour: Mill finished aluminium
13	Product: Fixed Roof Access
14	Product: External Door Hoop Colour: Refer to landscape drawings
15	Product: Existing plant
16	Product: Metal canopy (with clear glazing) Colour: White
17	Product: Render finish Colour: Mid grey to match existing cladding
18	Product: Corrugated metal roof Colour: Mid grey
19	Product: Windows Colour: Dark grey
20	Product: PV Panel

NOTE: Products and colours to be equal or equivalent.

DEMOLITION NOTES:	
	Existing elements to be demolished.
	Demolished External Walls
Refer to plans & sections also.	

181



Elevation Legend

CONSTRUCTION PHASE HAZARD IDENTIFICATION
in accordance with the Construction (Design & Management) Regulation 2015.

CDM
The hazard sign is a notification to other designers and contractors of foreseeable exceptional risks resulting from the design activities carried out by HLM Architects Ltd., which are beyond those reasonably expected to be identified by a competent person as defined in the Construction (Design and Management) Regulations 2015 - Regulation 9 & 10 and Industry Guidance for Designers (Section 4) published by the CDM (2015)

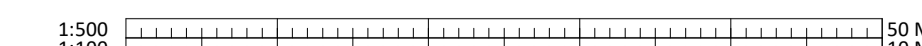
DRAWING REVIEWED	yes or no	YES
EXCEPTIONAL RISKS / RISK CONTROL MEASURES	see warning triangle	none or see warning triangle

Project	St Crispin's School	Title	GA ELEVATIONS (PHASE 3) 6TH FORM SHEET 2	Rev	06/12/2022	AL	KP
Client	WOKINGHAM BOROUGH COUNCIL	Scale @ A1	1:100@A1	Drawn	AL	Checked	KP
Date	06/12/2022	Revision	S4 STAGE APPROVAL	Revision	P01		

Notes Check all dimensions on site. Do not scale from this drawing. Report any discrepancies and omissions to HLM Architects. This Drawing is Copyright ©

© HLM Architects
Wool + Tailor Building
Fifth Floor
10-12 Allie Street
London E1 8DE

www.hlmarchitects.com
T: +44 (0) 20 7921 4800
F: +44 (0) 20 7921 4850
london@hlmarchitects.com



This page is intentionally left blank